

VRflow Quick Intro Guide

1: Powering up the Oculus Quest 2

1. Press and hold the small button on the right side of the headsets until the light comes on.
2. Put on the headset and adjust the headband and strap
3. Follow the on-screen instructions to create the Guardian. Select either Room Scale or Stationary.
4. Use the index finger trigger button to interact.

Make sure to set the correct floor level by touching the floor with a controller when prompted!

Alternatively, follow the instructions in [this video](#).

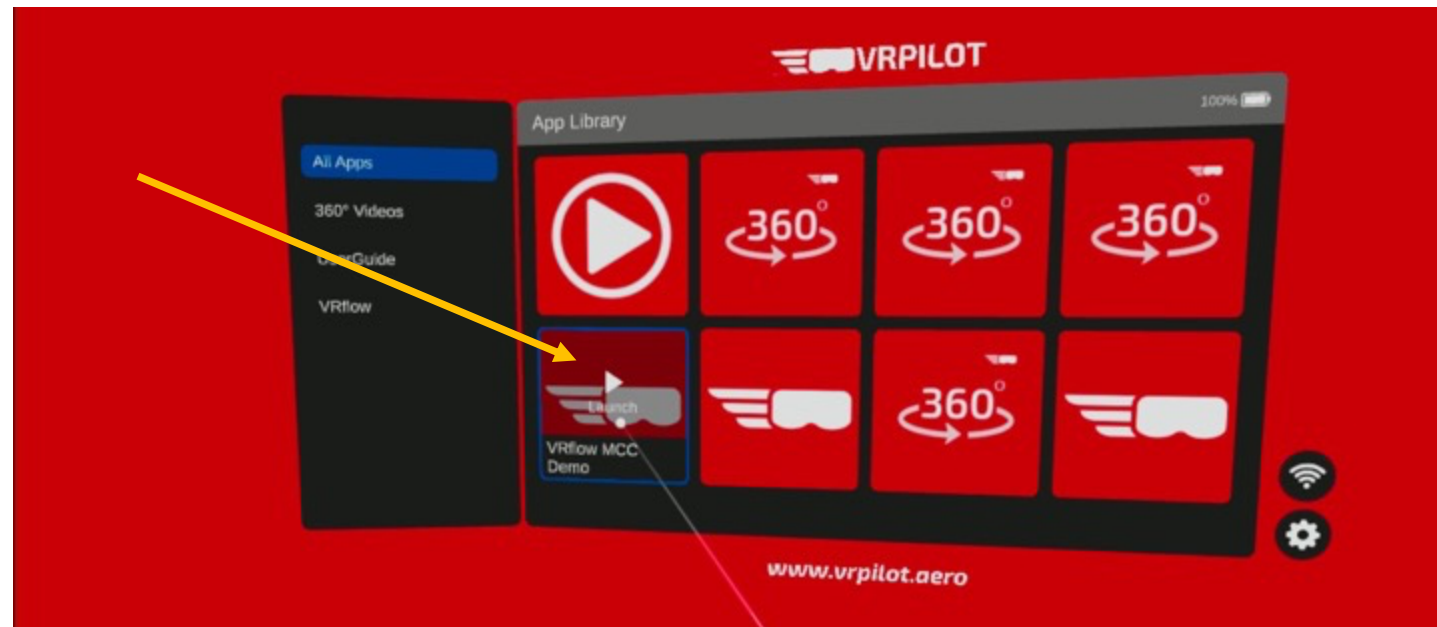
2: Connecting to a WiFi network

After setting up the Guardian, you should see the launcher menu below. Select the WiFi icon, select your network and enter the password.



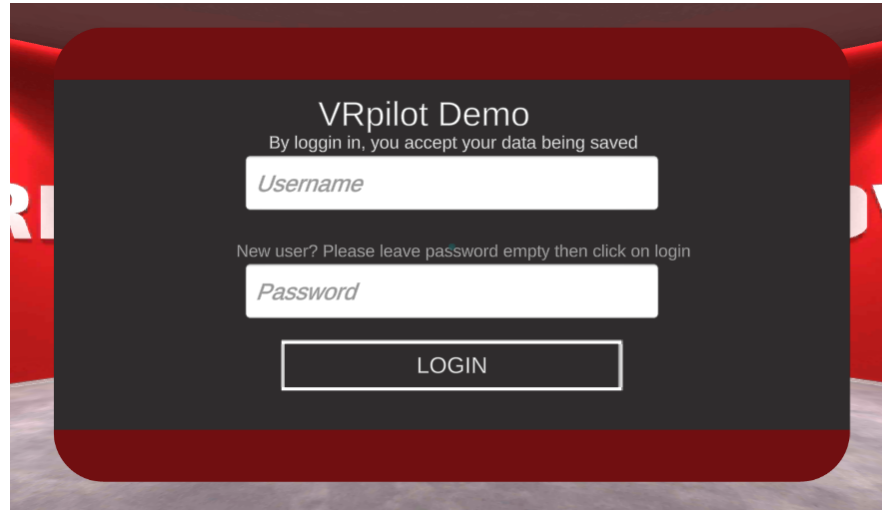
3: Launch the VRflow app

Back in the launcher menu, select the app called "VRflow MCC Demo [customer]".



4: Logging in to VRflow

When VRflow launches, you will enter the lobby. Here, you must log in using the credentials provided by VRpilot or your organization.

A screenshot of a VR login interface. It features a dark grey rectangular panel with rounded corners, centered on a red background. The panel contains the text 'VRpilot Demo' at the top, followed by a smaller line 'By login in, you accept your data being saved'. Below this is a white input field with the placeholder text 'Username'. Further down is another line of text: 'New user? Please leave password empty then click on login'. This is followed by a second white input field with the placeholder text 'Password'. At the bottom of the panel is a white rectangular button with the text 'LOGIN' in black capital letters.

VRpilot Demo

By login in, you accept your data being saved

Username

New user? Please leave password empty then click on login

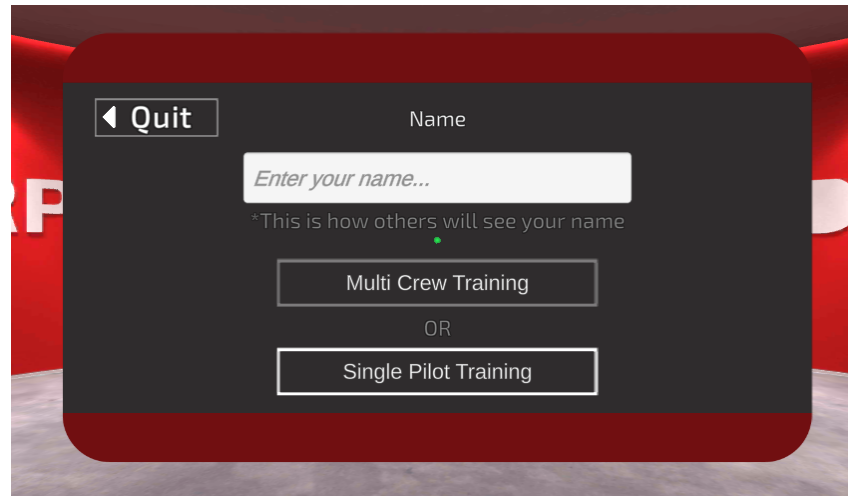
Password

LOGIN

5: Multi-crew or Single Pilot training

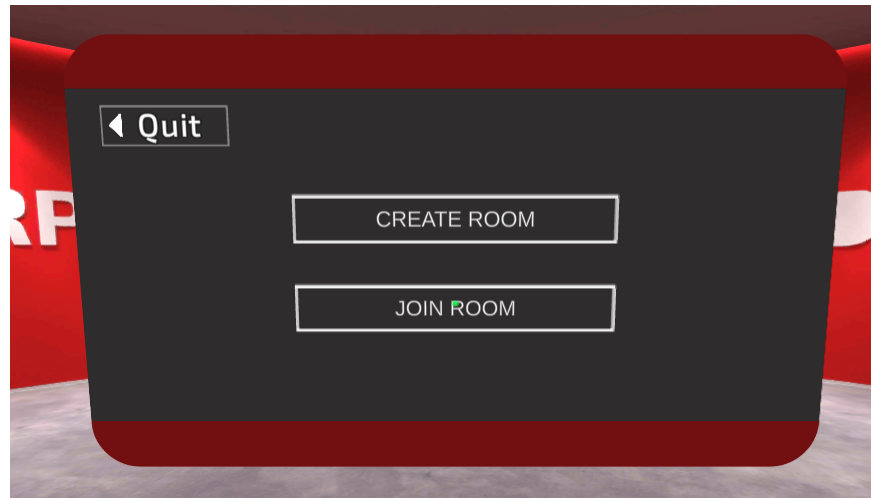
VRflow may be used either alone or collaboratively.

- Select “Single Pilot Training” to train alone
- Enter a display name and select “Multi-crew Training” to train with others



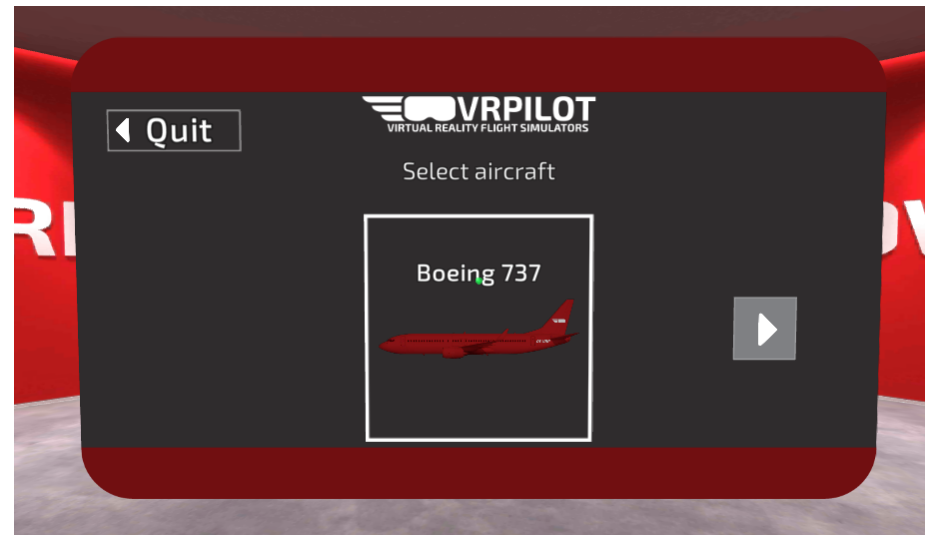
6: Create or join training session (multi-crew training only)

- If you are the host for the multi-crew training session, select “Create room”
- If you’re joining a training session created by someone else, select “Join room”



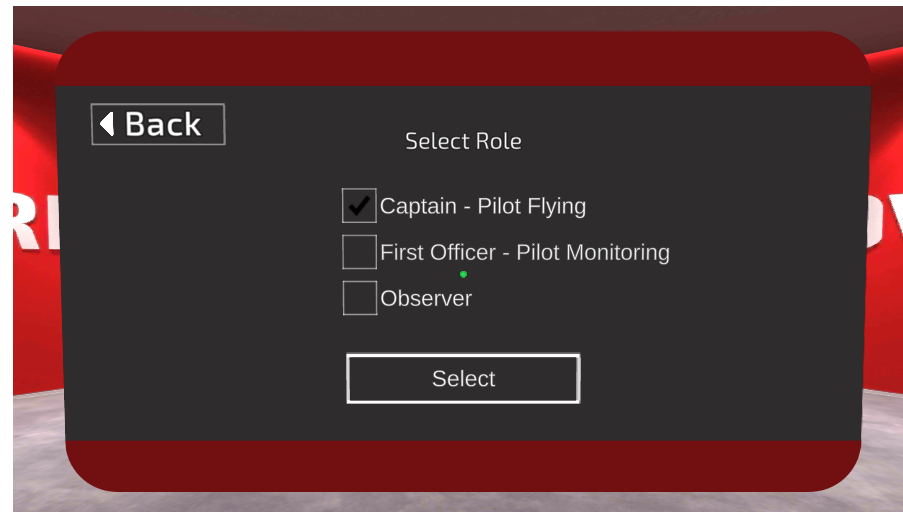
7: Select aircraft

Select the aircraft (if you're joining a session, the host will already have selected the aircraft).



8: *Select role*

Select your role in the training session. This determines which seat you will occupy during the session. The role between Pilot Flying and Pilot Monitoring may be switched during training.



9: Main Menu

If you're training alone or if you're the host, you will be able to select procedures to train from the main menu.

The possibilities are:

- Training Mode (visual help activated)
- Exam Mode (visual help disabled)
- Hit Me (runs a random emergency procedure without visual help)
- Start All (runs all Normal Procedures in chronological order)
- Error Tracking (enables interaction with every button)
- Start selected (run one or more procedures sequentially)



10: Scenario interactions

VRflow has two interactions:

- Touch/press
- Look

Buttons or levers to touch are highlighted in white and the color corresponding to your hands (your role, PF or PM). Press the index finger trigger to interact. Small buttons are also marked with an arrow for clarification.

Instruments or similar to read or look at are highlighted with an arrow in your color. The arrow fades in and out to differentiate from the touch interaction. Look until the green check mark is complete.

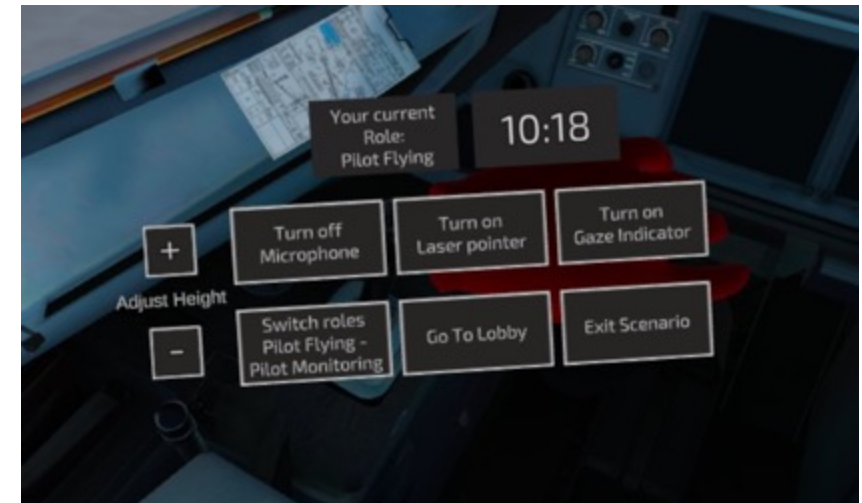


11: Wrist Menu

The Wrist Menu shows when you look at your left wrist, just like you would look at a watch.

The wrist menu provides the following functionalities:

- Adjust seating height
- Gaze indicator (highlights where others are looking in a multi-crew session)
- Laser pointer
- Exit scenario
- Go to lobby
- Switch roles between PF and PM



Tips & tricks

- Press and hold the “A” button on the right controller or the “X” button on the left controller to show the checklist for the current scenario
- Press the small “O” button on the right controller to exit VRflow (or use the button in the top left corner of the main menu)
- ***Do NOT use cleaning fluids on the headset’s lenses – only use a dry cloth***
- Adjust the volume using the buttons on the lower side of the headset
- Increase clarity by moving the headset up or down and adjust the distance between the lenses
- For more about using the Oculus Quest 2, [watch this video](#)
- Charge the Quest 2 using the supplies cable and charger
- Share the screen of the headset to a computer using [SideQuest](#) (Windows only) and the charging cable.

